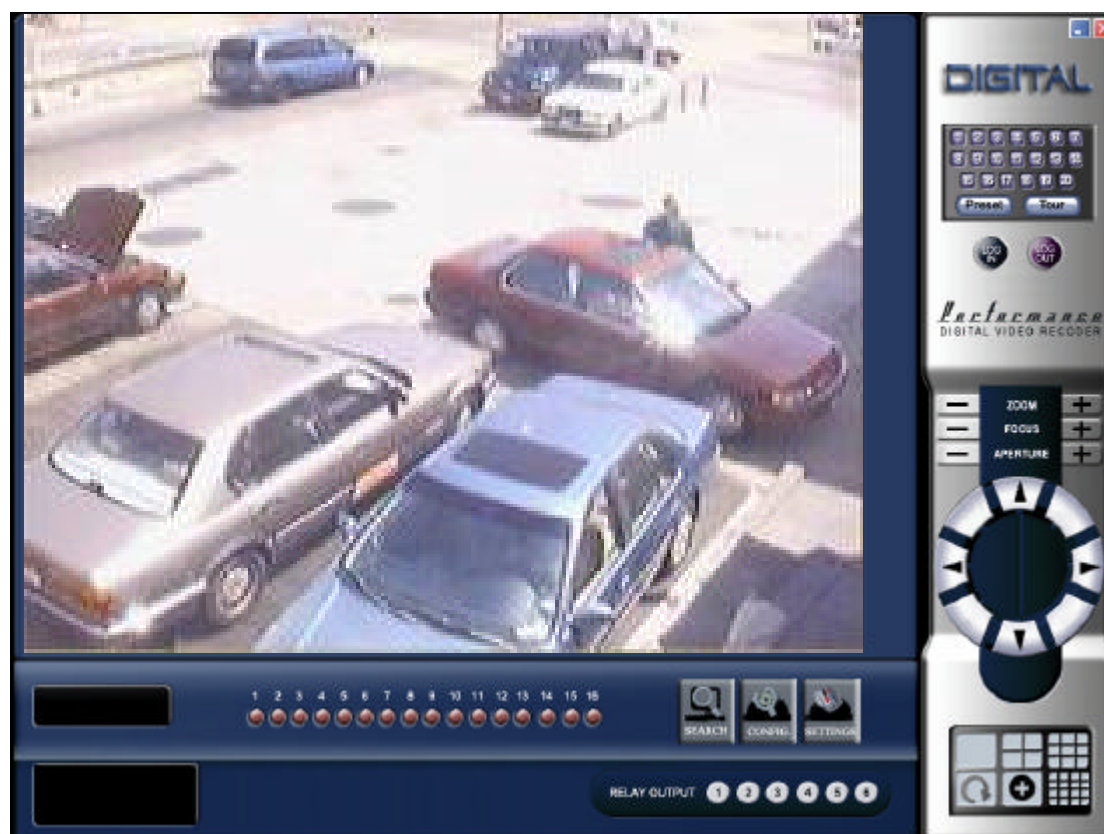


Performance Digital Video Recorder

Remote (Network) Operations Manual



Performance DVR

Remote (Network) Operations Manual

Contents

- 1. Operations Over The Network (Remotely) 2
 - 1.1. Access using Internet Explorer 2
 - 1.1.1. Function On The Main Screen 3
 - 1.1.2. Function Accessible Through Right Click . . 3
 - 1.2. Installation and First use of the Client Software . 4
 - 1.2.1. Installing the software 4
 - 1.2.2. First Use 5
 - 1.3. DVR Search and Playback 8
 - 1.4. DVR Setup 9
 - 1.4.1. System 9
 - 1.4.2. Schedule 10
 - 1.4.3. Image 10
 - 1.4.4. Alarm 11
 - 1.4.5. Motion Setup 11
 - 1.4.6. Video Parameter 12
 - 1.5. DVR Configurations 12
 - 1.5.1. Change Language 12
 - 1.5.2. Admin 12
 - 1.5.3. Camera Name 13
 - 1.5.4. Request Control 13
 - 1.5.5. Current Settings 14
 - 1.5.6. DVR Upgrade 14
 - 1.5.7. View Log 14
 - 1.5.8. Matrix Control 15
 - 1.5.9. Version Info 15

1. Operations Over The Network (Remotely)

There are two ways to access the DVR over the network: Using Microsoft Internet Explorer(IE) or using the Remote Client Software.

Using IE, no special software needs to be installed on the PC. A web control unit will be downloaded to the computer automatically the very first time a connection to DVR is initiated.

The Remote Client Software needs to be installed properly to use the second option. But the graphical user interface menu items are identical.

The Features are almost identical for both the web and the client software.

1.1. Access using Internet Explorer

To access the video using internet explorer(web) additional software is not required. This makes the access convenient and easy. All you need to do is open internet explorer and in the address bar type in the IP address of the DVR. If you are accessing the video for the first time from the computer you may be asked to accept an ActiveX control file. Please chose yes and the ActiveX controls will be installed, allowing you to view and control the cameras.

Once the IP address of the DVR is entered the following window will appear.




Click on "Login" and then you will be prompted to enter the username and password to access the dvr.


For details about the DVR Config, DVR Setup and DVR Search look at sections 1.3 to 1.5.

1.1.1. Function On The Main Screen

After logging in you will get the video from the DVR. And the connection speed will be displayed on the top right.

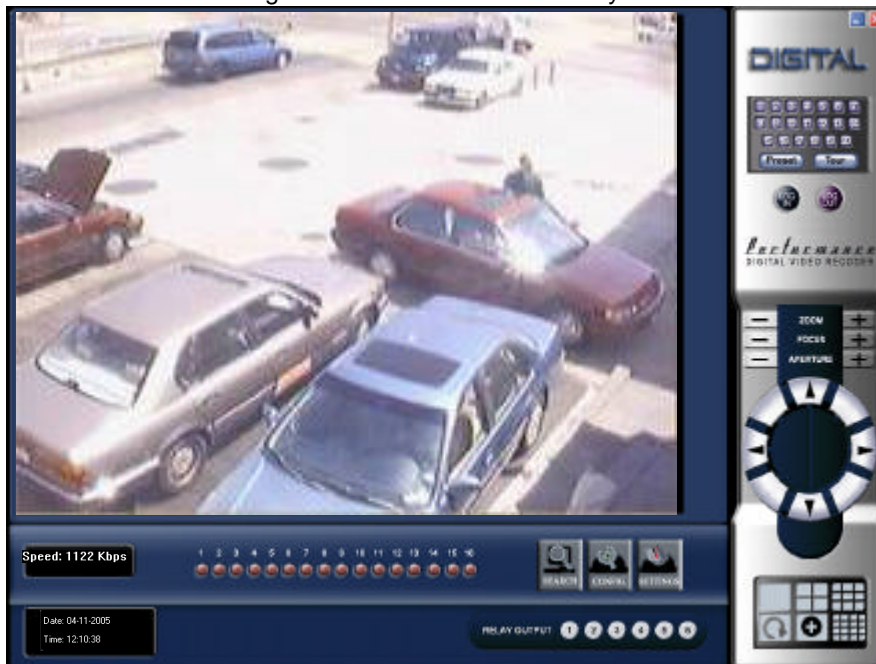
- You can choose to view multiple cameras by clicking on the "X1", "X4", "X9" and X16".

- Click on  to switch to the next set of cameras.

- Click on  to enlarge the video to full screen. Alternatively you can just double click on the video and it will become full screen. To return back to normal size either double click on the screen or right click on the screen and then click on "recover".

- By clicking on one of the numbers at the top right of the screen you can directly jump to a specific camera. The camera is opened in the single camera mode.

- Using the web and remote access software you can also conveniently change and update the settings of the DVR and search through the recorded video remotely.



1.1.2. Function Accessible Through The Right Click.



- **Maximize**: Will enlarge the picture to full screen
- **Preset Setup**: Allows to use the presets if the camera is a PTZ camera
- **Two Way Audio**: Opens the audio communications so that the 2 way sound can be enabled. This allows for audio communication between DVR and remote computer.
- **Pan-Tilt Control**: Allows you to move and adjust the camera if it is a PTZ camera. Once the option is selected the following window will appear allowing you to control the camera.
- **Save and Playback**: This option opens the control bar to record live video onto the local computer and then play it back. It also allows you to take still pictures of the current action which is also saved on the local computer.



- **Audio Control**: lets you control the volume of the video.



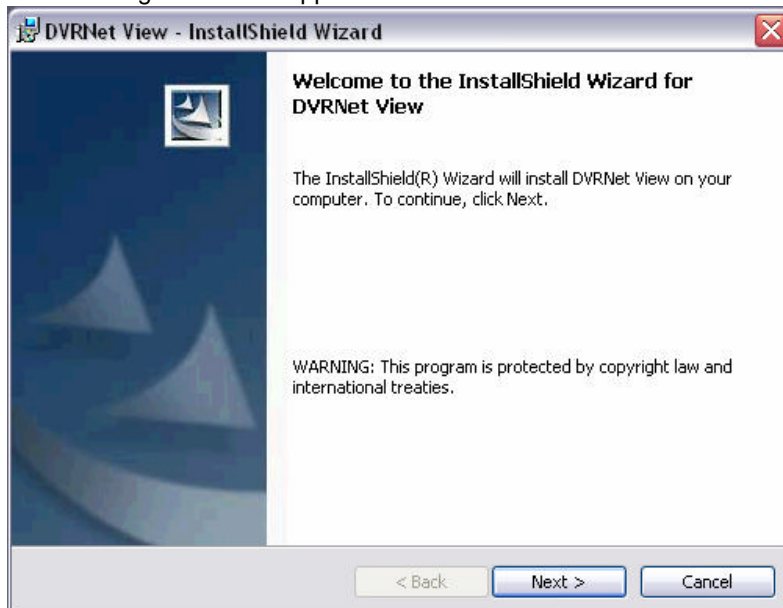
- **Custom View / Playback**: Lets you do multiple tasks like searching and playback simultaneously. To use custom view select 1 or 4 split. The click on the custom view screen and can select different cameras or click on search to view the search playback in the screen.

1.2. Installation and First Use of the Client Software

To access the video using the remote access software it must first be installed. The following is a step by step process for the installation and first use of the software.

1.2.1. Installing the software.

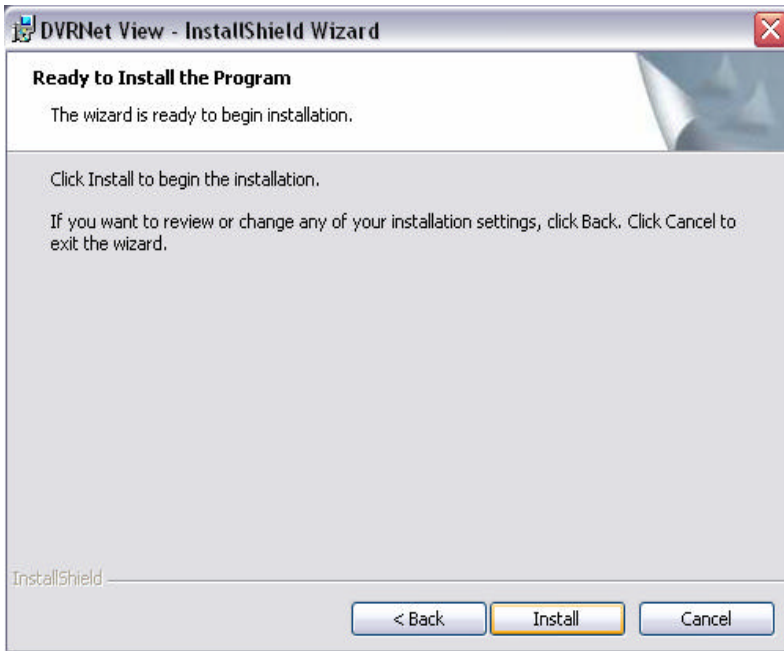
Double click on the setup file to install the software and the following screen will appear. Click "Next" to continue.



Now you can change the folder in which the software is installed. It is recommended you leave this setting as is. Click "Next" to continue.



Click on "Install" to finish the installation of the software.

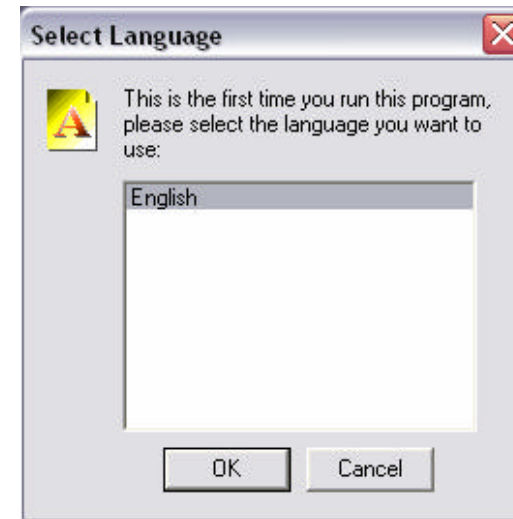


After the installation is completed the following icon will appear on the desktop and an entry in the program files will also be made.

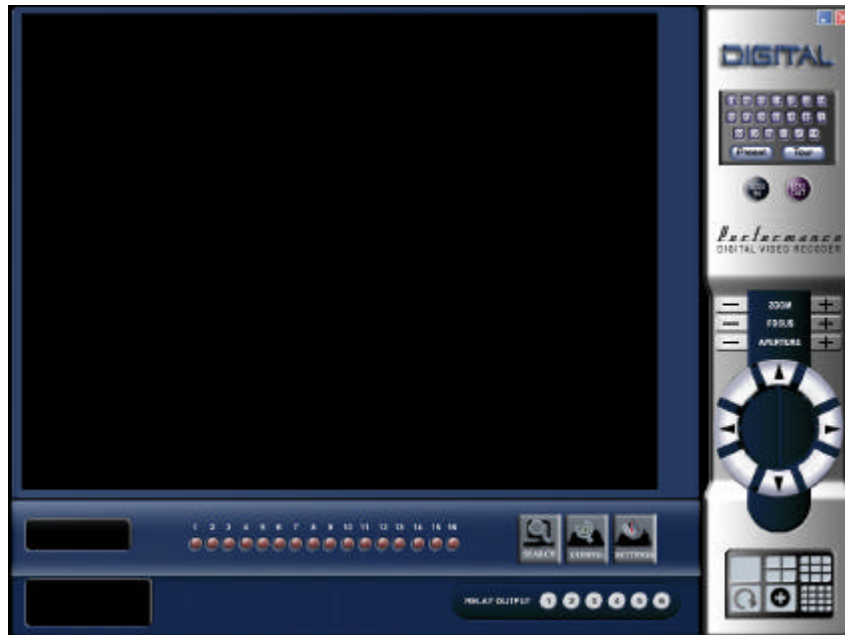


1.2.2. First Use.

When the software is started the first time it asks for a language selection to be made. Click on "OK" to continue.



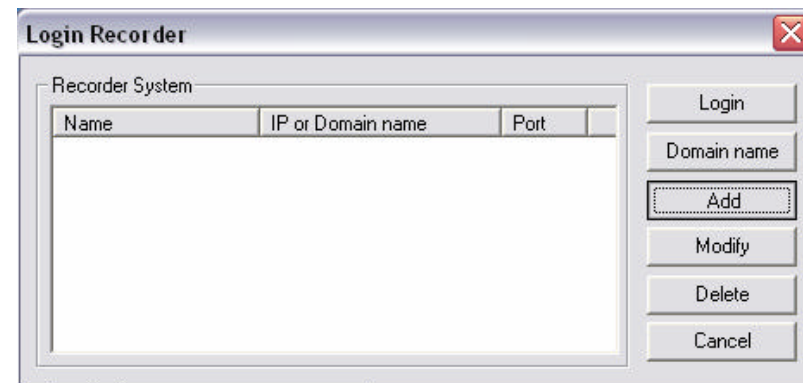
The following screen will appear. Click on "Log IN".



For access through high speed internet or network select "Network Login" and click "OK".



Click on "Add" to add a new site to connect to.



Enter a name for the remote site you wish to connect to. Then enter the IP address of the dvr followed by the TCP port that is set for the dvr to connect to. This port is set in the network section of the dvr.

Add Recorder

Name

IP or Domain name

Port

Select the site and then click on "Login"

Login Recorder

| Recorder System | | |
|-----------------|-------------------|------|
| Name | IP or Domain name | Port |
| Demo | 66.163.26.243 | 5000 |

Domain name

Enter the username and password to log into the dvr.

User Confirmation

Name

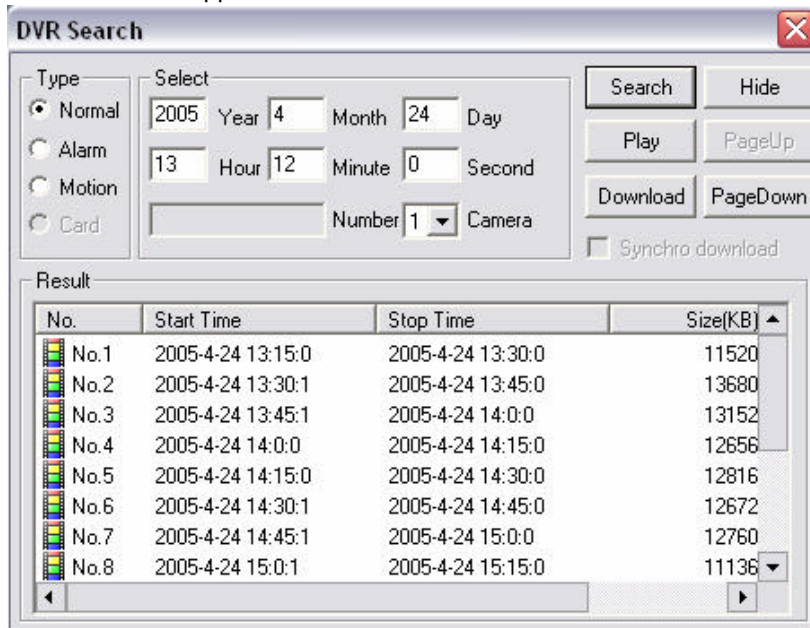
Password

Next video will start coming in.



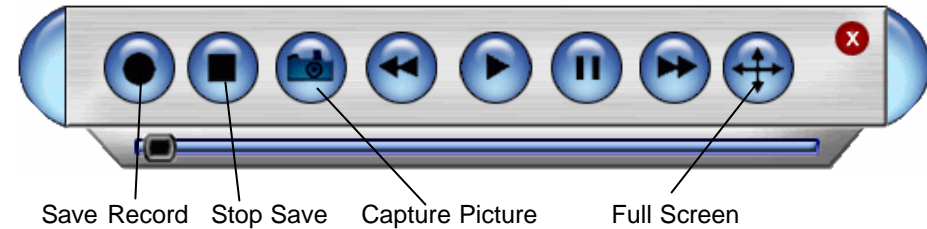
1.3. DVR Search and Playback

To search through and playback recorded video, click on “DVR search” and then enter the date, time and camera number you want to search. Then click on “SEARCH” and the following window will appear.



Enter recording time, channel number and type(Normal, Alarm/Sensor, Motion) and the results will appear below. The screen displays 15 records at a time starting from the entered search time onwards. Click on “PageUp” and “PageDown” button to get to the next next/previous group of 15 records. Once the required record is located, double click on it and system will play the record. This video can be played in full screen mode. You can also simultaneously download records to your computer. By default the records are saved in the “Download” folder in the C drive (C:\Download).

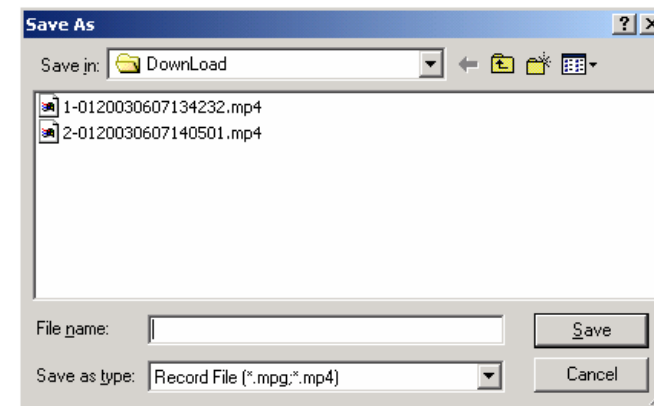
Play Back Control:



During the playback, you can operate the buttons in the playback bar such as: save record, stop save, capture picture, fast play, pause, full screen. During the playback on the video screen, the video can indicate the channel number, time and data flux of the record.

Download Option:

To download the video clip to your computer, select the clip and then click on download. You can select multiple clips and the software will download them all simultaneously. After clicking on download the following screen will appear:



You must enter some text for the file name and the rest of the name will be auto generated using the following scheme.

File name of the download consists of your entered text followed by year(e.g. 2005), month(e.g. 05), date(e.g. 29), hour(e.g. 16), min(e.g. 48), sec(e.g. 41) and camera number (e.g. [1]).

Once the file name is entered click on save and the file will be downloaded. The following screen displays the progress of the download.

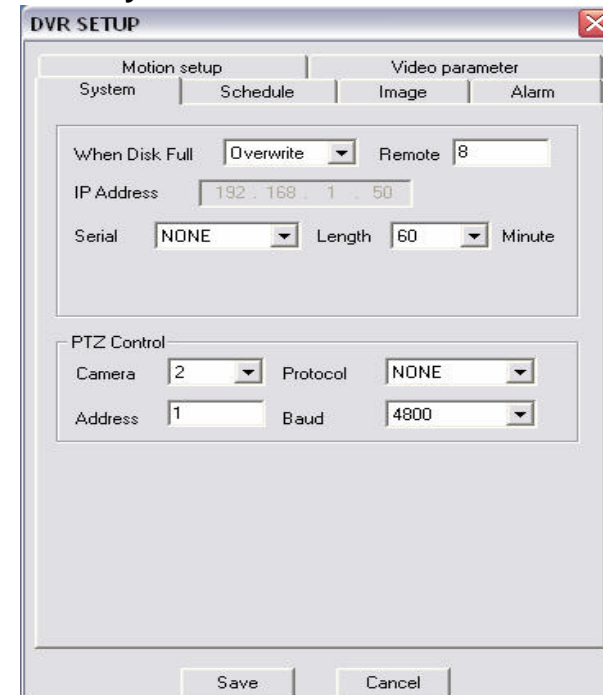


1.4. DVR Setup

Click on the “DVR SETUP” button and a window will appear with 6 options, System, Schedule, Image, Alarm, Motion setup and Video parameters.

Note: If a menu item is grayed out, it can't be changed and can only be modified directly from the DVR.

1.4.1. System:

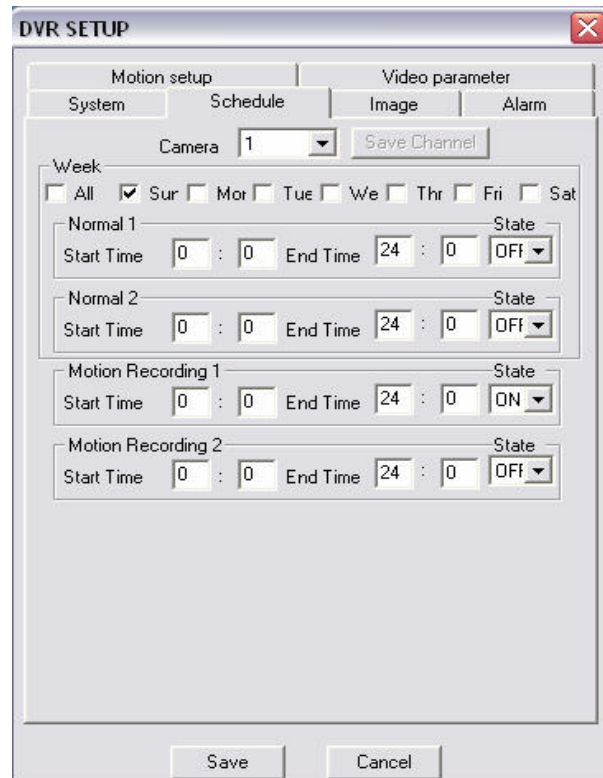


- **When Disk Full:** This option allows you to prevent the DVR from automatically overwriting the hard drive when it is full.
- **PTZ Control:** Use these options to enter the control information for the PTZ camera.

1.4.2. Schedule:

You can set up to two normal and motion recording durations.

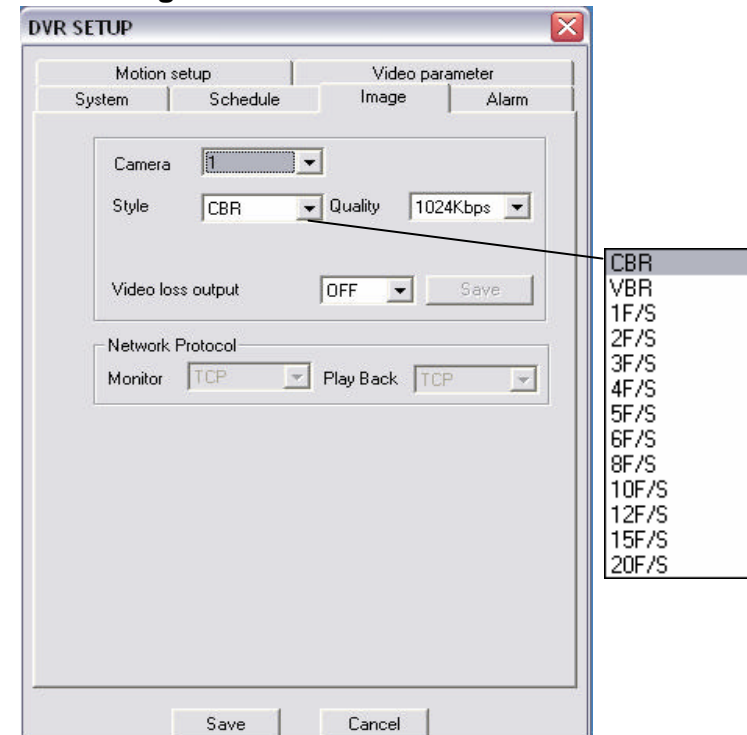
Note: If you want to record 24 hours then set TIME1 as 00:00 to 24:00 in ON status and TIME2 as OFF.



- **Week:** Use to define unique recording schedules for each day or select "All" to apply the same schedule for everyday.
- **Normal 1 / 2:** Use this setting to record all the time. There can up to 2 start and end times for this recording method. The time entered from the start to end duration will have continues recording. And as mentioned in the note above, If you want to record on normal for 24 hours then set TIME1 as 00:00 to 24:00 in ON status and TIME2 as OFF.
- **Motion Recording 1 / 2:** Use this setting to record only if there is motion detected by the camera. There can up to 2

start and end times for this recording method. The time entered from the start to end duration will have motion only recording. And as mentioned in the note above, If you want to record on motion only for 24 hours then set TIME1 as 00:00 to 24:00 in ON status and TIME2 as OFF.

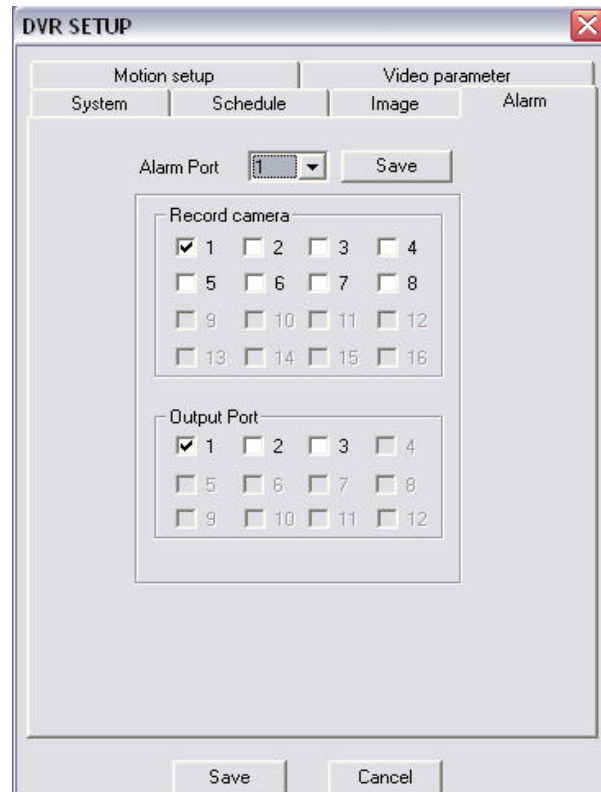
1.4.3. Image:



- **Camera:** Can be selected to modify settings for individual camera or select "ALL" to apply changes to the recording schedule for all cameras.
- **Style:** There are 2 recording formats, VBR (Variable Bit Rate) and CBR (Constant Bit Rate). The CBR by default records at the maximum possible frame rate but it can be manually lowered to 1 to 20 frames per seconds as shown above.

- **Quality:** Use this option to select the quality of the video. The higher quality takes up more space on the hard drive. There are 6 quality 128Kb/S, 256Kb/S, 384Kb/S, 512Kb/S, 768 Kb/S, 1Mb/S.
- **Video loss output:** Use this to trigger a relay in case of video loss.
- **Network Protocol:** Use this option to select the network settings.

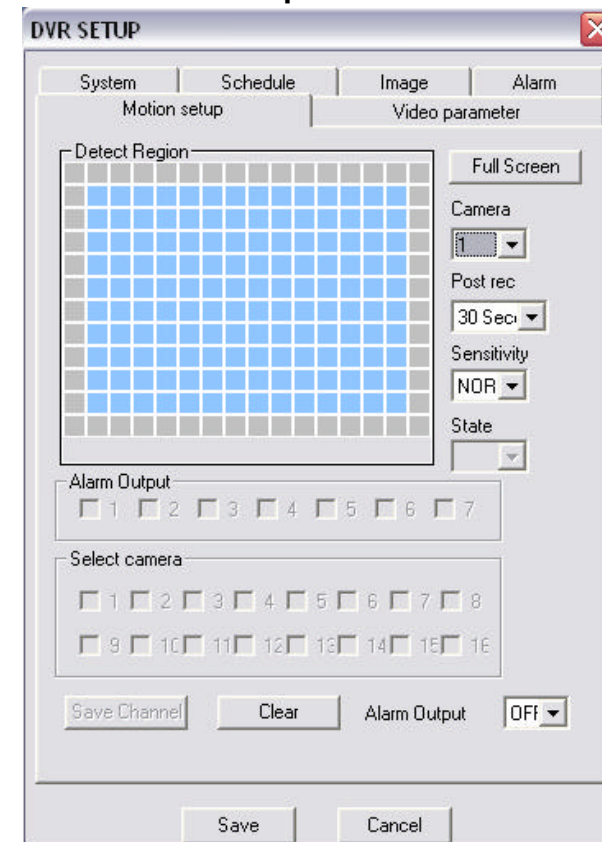
1.4.4. Alarm:



- **Alarm Port:** Can be selected to modify response to an individual sensor input or select "ALL" to apply changes to the action due to all input sensor.

- **Record camera:** For each sensor input signal we can force a camera to start recording.
- **Output Port:** For each sensor input signal we can trigger a relay.

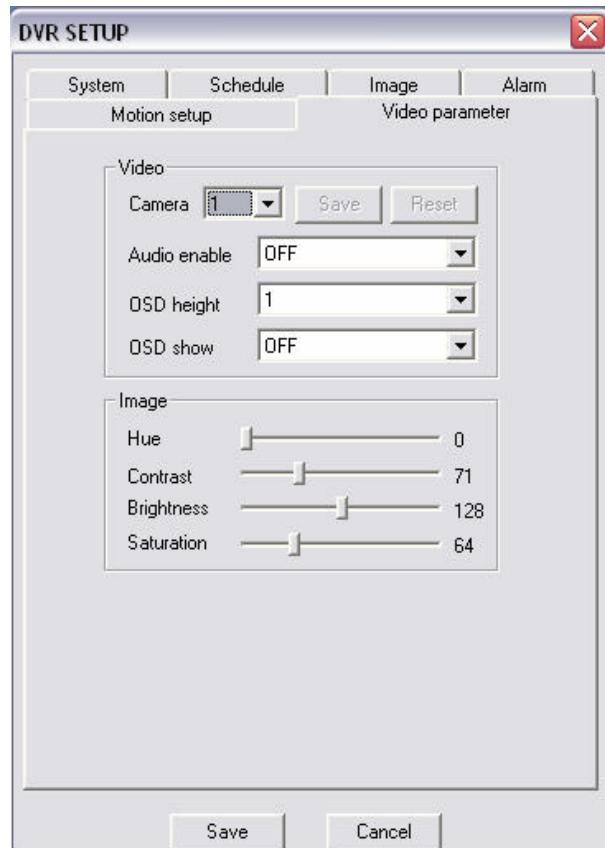
1.4.5. Motion Setup:



- **Detection Region:** The squares marked by the blue squares is the region in which the camera will detect motion.
- **Full Screen:** Select the full screen to enlarge the video from the camera to the full screen allowing you to easily select the detection region. To exit the full screen mode right click anywhere on the screen.

- **Post Rec:** This is the setting for the number of seconds of recording after motion is detected.
- **Sensitivity:** This is to adjust the sensitivity of the motion detected in the detection region. The options are low, normal and high.

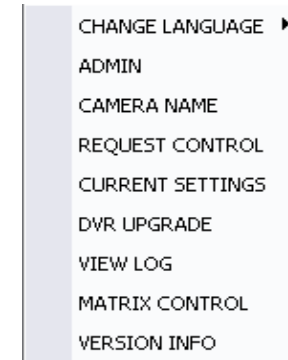
1.4.6. Video Parameters:



- This window can be used to set various attributes like the video Hue, Contrast, Brightness and Saturation, the OSD(On Screen Display) settings and audio options.

1.5. DVR Configuration

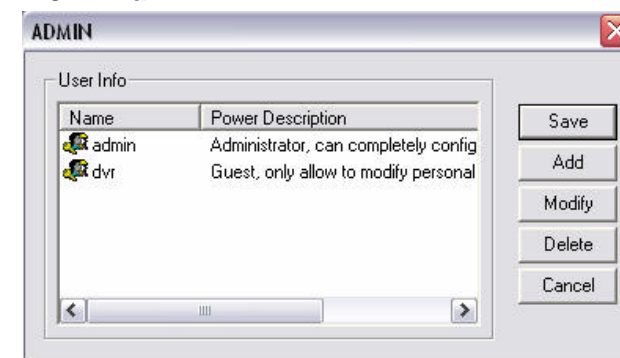
Click on DVR Config and the following options menu will appear. The details of the function are described below.



1.5.1. Change Language:

Use this option to change the default language.

1.5.2. Admin:



Use this option to add, delete and modify users. Also you can modify access level to the dvr system for each user.

There are 3 access levels.

- Guest: Only has access to view the cameras and modify personal details. This access level can't change anything on the system and also can not search.
- User: This access level can not change system preferences or other user's details, other wise has access to other things including search.
- Administrator: Has complete access.

1.5.3. Camera Name:

Use this option to change the display names for the cameras. The name will initially be greyed out so the user must click on the "Modify" button to be able to change the names. Click on "Save" after.

1.5.4. Request Control:

The web client software allows multiple users to view the video but if the user wants control of the system to access the PTZ or change information this option can be used. If an existing user already has control of the system, when a new user requests for control, the user will be asked for permission to transfer control to the new user. If the users accessing the system have the same access level the control is assigned to the first person that requests for it but if a user with higher access level is present the control is automatically transferred to the user with higher access. If only one user is logged in or the user already has control the box is greyed out.

This is the prompt the user with control will receive if another user requests for the control. Click on OK to transfer the control and Cancel to keep it (not transfer control to the other user)

1.5.5. Current Settings:

The 'CURRENT SETTINGS' window displays the following information and controls:

- Disk Info:** Count: 1, Total Capacity: 152620 M, Remain Capacity: 0 M. Includes an 'OK' button.
- File Info:** Begin Time: 2005-05-26 10:49:22, End Time: 2005-05-31 15:28:27.
- Audio:** Radio buttons for 'Open' (selected) and 'Close'.
- Video Transport Mode:** Radio buttons for 'Real Time' (selected) and 'Extract IFrame'.
- Video Type:** Radio buttons for 'PAL' and 'NTSC' (selected).
- Preview Image:** 'style' and 'Quality' dropdown menus.
- Auto Recycle Monitoring:** Radio buttons for 'Open' and 'Close' (selected). 'Interval: 5 Second'.

Use this to check system information. Also from this window the user can enable or disable the audio recording feature, select video transmission speed (real time for live video and extract frame for less transmission). If the user selects Auto Recycle Monitor the system will sequentially show each camera according to the time interval selected by the user.

1.5.6. DVR Upgrade:

The 'DVR UPGRADE' window includes the following elements:

- 'Open File' button and an empty text input field.
- 'Current Progress' label and an empty progress bar.
- Buttons for 'Send Bios', 'Send Web', 'Send Boot', 'Boot and bios', and 'Cancel'.

An Administrator can upgrade the software installed on the DVR remotely using this window. To upgrade the software click on open to browse the file, then click on the appropriate button below. After the upgrade the DVR will automatically restart.

1.5.7. View Log:

The 'VIEW LOG' window displays a list of events in a scrollable area:

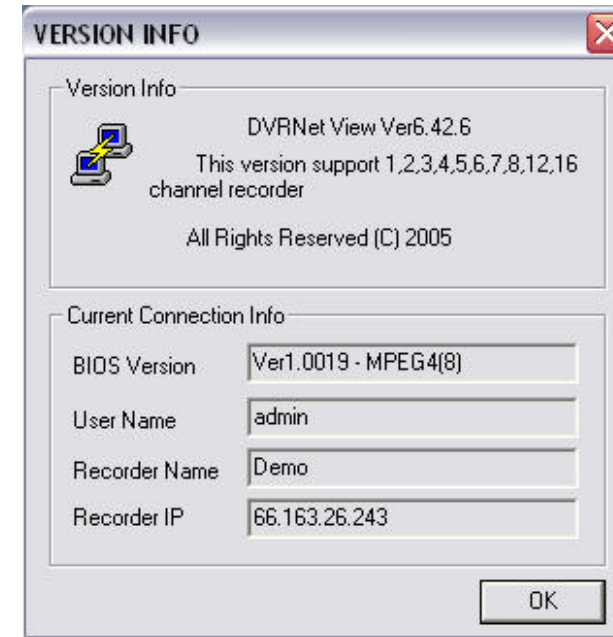
```

5/29 18:47:42 2005 user: admin login
5/30 10:16:15 2005 user: admin login
5/30 13:49:7 2005 user: 1 login
5/30 14:2:42 2005 user: 1 login
5/30 18:37:24 2005 user: admin login
5/30 19:23:58 2005 user: admin login
5/31 8:26:18 2005 user: admin login
5/31 9:36:4 2005 user: admin login
5/31 13:26:51 2005 user: admin login
5/31 13:39:39 2005 user: admin login
5/31 14:28:9 2005 user: admin login

```

At the bottom, there is a 'Save Log' button and an empty text input field.

Use this option to view the log saved on the DVR.

1.5.8. Matrix Control:**1.5.9. Version Info:**

Use this window to get information about the DVR.